

**Some model builders go to great lengths to reproduce real-life subjects in exacting detail. Other builders...well...not so much! “Started with the body of a bat\* then added suitable wings and bits” was how Andy Salamanchuk described this Russian Mig 30 project. (\*Batmobile)**



**This Meeting – Wednesday February 1<sup>st</sup>**  
**Next Meeting – Wednesday March 7<sup>th</sup>**

## THE EXECUTIVE PAGE

### PROGRAMME FOR THE FEBRUARY MEETING

- 6:30 - 7:30 pm** Bring, build, socialize, buy, sell or trade.
- 7:00 pm** New Year Goodies; Discussion about air-brushing; problems and solutions.
- 7:30 pm** **Business Agenda** (no reason not to continue building at the same time).
- Visitors and introductions.
- Open Forum.
- Old Business: Reminder of take-down at the mall.
- New Business: Participants for Heritage Festival. Preliminary list for Collectors Show
- Junior Time.
- Reports and Updates: Treasurer.
- Models on the Display Tables.
- Prize Draw

### 2012 EVENTS CALENDAR

- February 5<sup>th</sup>:** Heritage Festival.
- February 12<sup>th</sup>:** Removal of display from the Centre Mall galleries.
- February 19<sup>th</sup>:** Sunday Build Group - Rusty Macdonald Library (Lawson Civic Centre) at 1pm.
- March 7<sup>th</sup> Meeting:** Club Meeting Theme Night.  
• **Tamiya Tonight!**
- March 11<sup>th</sup>:** Sunday Build Group - Rusty Macdonald Library (Lawson Civic Centre) at 1pm.
- March 16<sup>th</sup> - 18<sup>th</sup>:** **Collectors Show at Prairieland Park.**
- April 4<sup>th</sup>:** **SPRINGTIME SWAP AND SALE!**
- April 6<sup>th</sup> - 7<sup>th</sup>:** **(Easter weekend) - Draggins Show contest and display.**
- June 2<sup>nd</sup>:** Western Canada Regional Model Contest, Alberta Aviation Museum, Edmonton.
- June 6<sup>th</sup> Meeting:** Club Meeting Theme Night...TBD
- August 4<sup>th</sup> - 5<sup>th</sup>:** Saskatoon Air Show.
- August 5<sup>th</sup>:** **Centennial of Flight in Prince Albert**

## THE PRESIDENT'S PIECE

With more than thirty club members contributing in various ways, **SMAS** has a display in the mall that is again drawing lots of public attention. It's such a pity that we are not able to have a work table there on the weekends as was done in the past. There are many people who enjoy asking questions or just talking about what they see. So far the longest single conversation during my visits lasted about 25 minutes. Generally all went well with set-up, although there are a couple of things that need review and attention. Firstly, do we have enough SMAS signs or not? It would be too easy to go overboard in that regard, so some opinions from the membership are required. Secondly there are table supports that need more shelf edging to hold the surface laminate in place, a maintenance item to be done over the summer.

Enthusiasm from within the club for these type of shows remains high, but I think we need to remember these sorts of functions are only a part of what SMAS is all about. It is too easy to develop a narrow focus on one particular event and forget it only serves a purpose for the group, it is not the purpose of the group. Over the years I've seen other organizations fall into that trap, sometimes to the point where membership falls off and they cease to exist. I hope nobody looks upon these types of displays as a chore or an obligation. Whether members want to take the opportunity to participate and have opportunity, is strictly up to the individual.

...Continued on page 3

### CLUB MEMBER DISCOUNTS

**Hobbyworld** 

Ph: (306) 652-4775  
Email: hobbyworld@shaw.ca  
Web: www.rchobbyworld.com  
1521 Idylwyld Drive North  
Saskatoon, SK S7L 1A9



 **GROUP 2 HOBBIES**

Ph: (306) 749-3606  
Email: mailorder@group2hobbies.com  
Web: www.group2hobbies.com  
P.O. Box 339, 279 Bellamy Avenue  
Birch Hills, SK S0J 0G0



**J&P Hobby Supplies**

Toll Free: 877-574-6229  
Email: jp.hobby@sasktel.net  
Web: www.jphobbies.com  
300 - 13th Street West  
Prince Albert, SK S6V 3G3



---

...Continued from page 2

So having said all that, here's a couple of ideas for future events. We have to go back to the **Diefenbaker Centre** displays to find it has been a while since real spacecraft were featured. Such a collection could also include real life projects that are currently planned, such as the **Mars Mission**. That though will almost certainly mean scratch-building some realistic machines, rather than just imaginary science fiction ones. Possibly a subject for 2013?

Secondly, how many people are interested in doing an "**Operation Overlord (D-Day)**" special for 2014? Sounds like a long way away but personally, if my **Hamilcar** glider project is any guide (2 years and counting), all that time will be needed.

At the January meeting during the **Open Forum**, a possible alternative acrylic paint was introduced by **Rick Hales**. Rather surprisingly it was the "**Behr**" brand that is available in small, sample size (215ml jars) at around \$5. **Home Depot** appears to be the main source in Saskatoon. For size comparison, small bottles such as **Gunze / Tamiya** are 10ml. Of course the initial reaction was "*that's house paint*", as visions of "3" brushes and rollers flashed in front of your eyes. Even though people found that adhesion to plastic was not 100% (scratch tested), Rick's sample as painted onto an old chassis looked promising. So a jar was acquired with the thought that if it proved unsuitable for actual models, it could always be used for diorama backgrounds. Now a few more colours are on the bench, with a number of tests underway for a **Painter's Palette** article. To work well on plastics an additive is needed, something that may just have shown up in **Fine Scale Modeler (FSM)**. FSM has an article on the use of craft paints in the current edition.

Two things I learned while picking out paint colours in the store. Number one, take a colour sample along. Number two, take the manufacturer's colour chip out into the daylight with your sample for comparison. That was not done with the first colour intended to be for **RAF** camouflage, but was done from memory! Consequently I selected the wrong one but as luck would have it, the colour I picked is a perfect match for one of the **WW2 Luftwaffe** colours. In addition the machine that actually mixes the paint can apparently be programmed to match any colour from a suitable size sample. That will also be addressed in a future article.

It is always helpful to learn of things that do not work and this month an article from **Murray Kish** has saved me the bother of testing one particular material. I'm sure club members try other things that do not work and when that happens, this is the place for it to be published.

- Mike Reid

---

## ***IT LOOKED LIKE A GOOD IDEA AT THE TIME !***

I'm always on the lookout for better filler. I don't have the patience to wait for putties to dry and they shrink. I've tried **Milliput** and various other epoxy putties, but they are messy and you need to keep mixing up batches. The thing that really works the best for me is to use CA glue with accelerator. As long as you sand it within a few minutes of applying the accelerator, it's still workable. But if you make a mistake and let it cure for too long, you're in trouble because it literally goes rock hard. In addition, it is not so easy to feather out and often I end up with a final thin coat of putty (over the CA) to feather/blend things more smoothly.

The rest of this story does not end happily. I thought I discovered a new filler, but unfortunately it just didn't work out.

My wife is fond of gel nails. If you're not familiar with what they are, then I will oversimplify it and just say that it is a method of applying false fingernails. The nails are covered with a very thick form of 'plastic' that is shaped, sanded and polished to make them very durable and strong. It takes some specialty equipment and usually people go to a salon or specialist to have them applied. However, my wife has trained herself how to do it, so therefore she has the equipment and supplies at hand.

While watching the procedure one night, I was amazed at how similar the process was to filling/shaping model parts. There is basically a specialty gel applied in a thick coat to the surface of the nail. Then there is a small UV light-box where the freshly 'gelled' nails are put for about 20 to 30 seconds to have a dose of UV light. When they come out the gel is completely cured, hard like plastic and can be shaped instantly with files. Of course when I saw this, I was thinking immediately about how I could apply this to my hobby. And coincidentally, that little UV light device looked just about the right size to even take an entire 1/24<sup>th</sup> scale car body. So testing commenced.

The first trials seemed quite promising. The gel went on smoothly and was partially self-levelling, similar to medium viscosity CA glue. The UV light was applied to the part and it really did cure in about 20 to 30 seconds. When removed it could be sanded without any immediate problems. Two or three coats were sometimes necessary to get the final result, but this was not really an issue when it fully cures in 30 seconds. It can be built up in multiple layers to make a thicker filler where needed.

But then, just about the moment where I really thought I had discovered something fantastic, the entire glob of cured gel simply broke away from the plastic. It didn't really adhere to the plastic surface of the model, while the more I shaped and sanded it, the

...Continued on page 5

# MALL DISPLAY 2012

This year's display has about 240 models (not counting small scale figures) and involved the participation of 33 club members in one way or another. Pride of place has to be given to the **R.M.S. Titanic**, "Then and Now" exhibit prepared by **Cam Tetrault** and **Greg Burke**. Also of note is the single-handed effort that was provided by **Patrick Elkington** showing evolution of the **Chevrolet Camaro**. A



1:350 Scale  
Titanic wrecked bow section  
with ALVIN D.S.V.



1:350 Scale  
Titanic wrecked stern section.

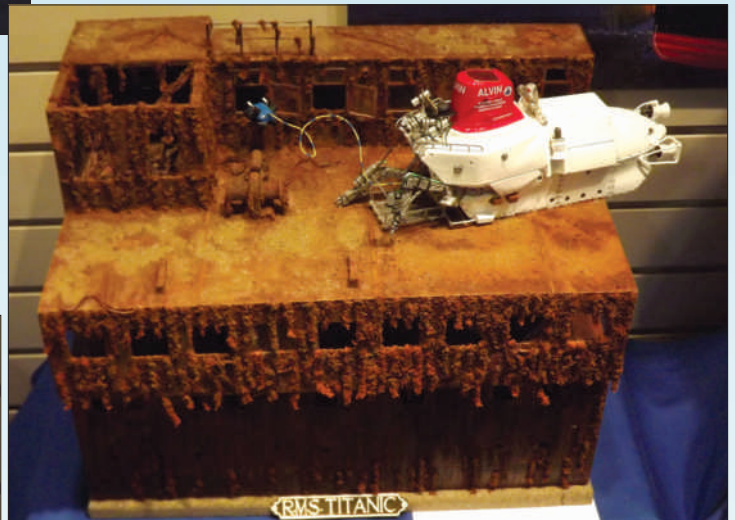
definite eye-catcher is **Chris Parson's** big yellow **Canso** water bomber, now with a companion **Grumman Tracker** in the same Saskatchewan Government colour scheme.

Once again we have some commendable exhibits from students, courtesy of **Shane Armstrong's** Social Studies programme, including an imaginative **Vimy Ridge Memorial/battlefield** scene.

The display is larger than planned because the mall's coordinator offered us a fifth gallery. That extended the set-

up time a little on Sunday and in fact the whole presentation was not completed until Monday evening. Only a few photos are included here and more will be on the web site for those who cannot get to the mall. All in all things went pretty well as intended and I would like to thank everyone for their patience.

- Mike Reid



R.M.S. TITANIC



1:700 Scale  
R.M.S. QUEEN MARY 2 CARNIVAL CORPORATION & P.L.C.  
LAUNCHED: JANUARY 8<sup>TH</sup>, 2004  
OPERATED BY CUNARD LINES  
1332 FEET LONG - 111 FEET WIDE - 88A (SPD 300+KNOTS)  
151,800 GROSS TON - 157,000 HP (CRUISE SPD 28.0+KNOTS)  
DESIGNED TO CARRY 2,620 PASSENGERS 1,251 CREW  
  
1:700 SCALE  
R.M.S. TITANIC, WHITE STAR LINE  
LAUNCHED APRIL 11, 1912 1007 MAY 15, 1912  
1007A PASSENGERS ON BOARD 2203  
PASSENGERS 1502 1014 CREW/BOAT 711



...Continued on page 5

...Continued from page 4



...Continued from page 3

more likely it was to detach itself. I tried many things, including cleaning the plastic thoroughly, roughing up the surface, even drilling some holes into the underlying plastic. All of those things did improve the adherence to the plastic, but in each case the filler would still come loose. It took a bit of pressure to remove it, but the fact that it would just pop off in one big piece was a pretty clear indication that it was just not bonding or adhering to the underlying plastic. At that point I gave up.

I didn't write the brand names or other details about the products. Mostly because I just wanted to share my experience, in case someone else had a similar idea and was thinking to give it a try. If someone is interested in more details about the specific products I tested, please send me an email. The equipment and materials my wife uses are not really available on your average department store shelf, so there's a bit of an investment required. I'm sure a person with some motivation could find and buy materials on-line. But based on the testing I did, I just don't think it would adhere very well to plastic. If anyone one else has also tried this, I would be interested to hear their results?

- Murray Kish

**SMAS WEBSITE**

Need to find SMAS newsletter back issues? Check us out! You can find them at: [www.smasonline.net](http://www.smasonline.net)



# THE ARMOUR PARK

## 7.5cm PaK40/4 auf Raupenschlepper, Ost (Sf) in 1/35<sup>th</sup> Scale

The **Raupenschlepper, Ost (RSO)** was developed after the Wehrmacht experienced the heavy rains and mud on the Eastern Front in the fall of 1941. The Raupenschlepper (En: caterpillar puller or crawling tractor) was developed as prime mover to pull guns and wagons. It was made of light pressed metal with a wooden load platform so that it could also transport men and materiel. Some models had a covered cab for the driver. The RSO was so loud that the troops that had to drive it called it "Austria's Revenge". The RSO was very effective in its role and thousands were produced during the war. It was inexpensive and easy to build and maintain.



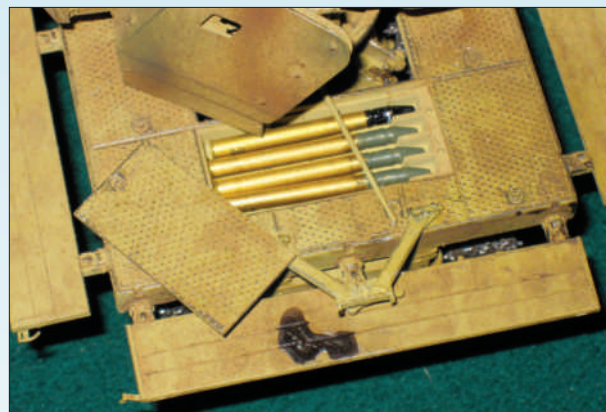
In August 1943 **Steyer**, the Austrian company that was building the RSO, indicated to the **Waffenamt** (Ordinance Department) that it could be used as a platform to transport the 75 mm PaK/40 that had been developed as an effective anti-tank gun. The 7.5cm PaK40/4 was being pulled by the RSO so it was thought that by mounting it on the RSO it could be moved and setup and takedown time would be minimized. In the version that mounted the anti-tank gun, the wooden deck was replaced with a metal fighting platform that was actually a series of storage lockers used to

stow ammunition. In the model these can be opened (*see photos*). After some development and trials the **RSO 7.5cm PaK40/4 auf RSO** were issued to Army Group South in October 1943. Then in March 1944 production was started and ramped up to about 400 units per month. Production continued until Austria was overrun by the Red Army in the spring of 1945.



The kit is **Dragon "Smart Kit" No. 6640** that came out in 2010. The kit has 460 parts

plus an extensive set of photo-etched hardware to make for nice fine detail on the hatch covers and latches. I purchased it in Hong Kong for \$38.50 CAD, which was a premium price since I got it right when it came out. Since I like to build sort of non-typical things, I had to have it!!!! The build is essentially an out-of-the box that was completed over a period of about a month. The photo-etched parts took



quite a while but I did learn to use my new mini-tools. For such a small model, it was a complex construction and very delicate. The brass ammunition is an aftermarket upgrade produced by **VoyagerModel** (Shanghai).

I have depicted the RSO as it would have appeared on the Eastern Front in the summer of 1944. **Tamiya** acrylics were used for the base colour and camouflage. I did a wash with a mixture of acrylic and oil based pigments in a mixture of alcohol and turpentine. This not only gives a contrast wash in crevices, it also adds some texture since the acrylic does not really dissolve in the turpentine paint thinner. I weathered parts with **LifeColor** weathering paints for rust and oil and grease and smoke on the exhaust. The tracks (**MagicTrac**<sup>®</sup>) were difficult to do. I used a base coat of **Krylon**<sup>®</sup> "**Pounded Metal**" (available at **Walmart**), then did a wash with India ink and weathered with several shades of brown and light earth. To simulate where paint had been worn off of the dimpled surface of the fighting deck, I highlighted metal parts with #2 graphite pencil.



I now have the RSO with crew cab and towed 75 mm PaK/40 kit from **Revell** on the shelf to build one day. I picked it up at **Hobby World** for a really good price. *Thanks Nick!!!*

- John P. Giesy

# THE INSIDE SCOOP

Here are some build shots of the **Titanic** diorama in the display. Just to give folks an idea of the stuff that is in the diorama but can't see clearly. I should probably start a diorama of the **Costa Concordia**! Photos are listed by number with the following information.

Photo 1 - Start of construction in Jan. 2011. Hundreds of rivets nobody will see!

Photo 2 - Rose's 1st class cabin could really use maid service! Note the tea cup on the night stand has not fallen on the floor.

**James Cameron** actually filmed that in one of the 1st class cabins.

Photo 3 - 1st class deck before the boat deck goes on.

Photo 4 - Jack's sketch of Rose in her 1st class boudoir.

Photo 5 - One of the officer's cabin's with table setting and toiletries.

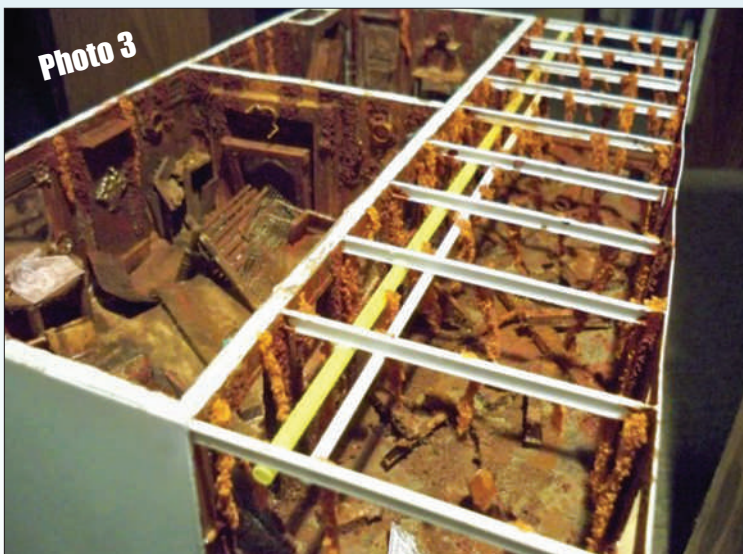
Photo 6 - Gymnasium exercise equipment: Stationary Bike and Electric Horse.

Photo 7 - 1st class promenade rusticles and wreckage. Rose's boots?

Photo 8 - Finished diorama with **Alvin sub** and **JJ mini bot** exploring Titanic wreck.

Photo 9 - Additional pic of finished diorama with Alvin sub and JJ mini bot.

- Cam Tetrault



...Continued on page 8

...Continued from page 7



Photo 5



Photo 6



Photo 7

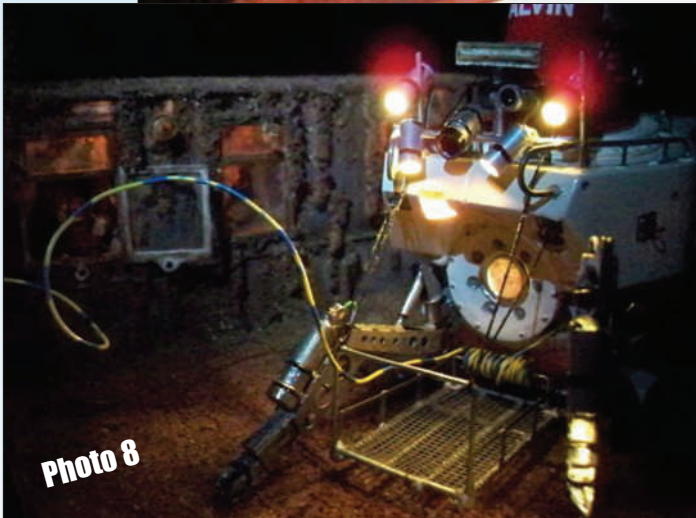


Photo 8



Photo 9

### SMAS Executive

Mike Reid - President  
& Newsletter Editor  
Ph: (306) 477-1927  
Email: minreid@shaw.ca

Brad Boyle - Vice-President  
Ph: (306) 956-0646  
Email: b.boyle@sasktel.net

Rick Hales - Treasurer  
Ph: (306) 933-2938  
Email: richale@sasktel.net

Printing Courtesy of

**mister  
print**

1-306-934-7575  
619 - 8th Street East  
Saskatoon, SK Canada

SMAS meets on the first Wednesday of each month at the Parkridge Centre, 110 Gropper Crescent, Saskatoon (off Fairlight Drive), officially starting at 7:00 p.m. Any suitable material received for the newsletter on the Sunday before the meeting, stands a very good chance of being printed for that issue.